



MIAMI-DADE COUNTY
BUILDING CODE COMPLIANCE OFFICE (BCCO)
PRODUCT CONTROL DIVISION

MIAMI-DADE COUNTY, FLORIDA
METRO-DADE FLAGLER BUILDING

140 WEST FLAGLER STREET, SUITE 1603
MIAMI, FLORIDA 33130-1563
(305) 375-2901 FAX (305) 375-2908

www.buildingcodeonline.com

NOTICE OF ACCEPTANCE (NOA)

Town & Country Industries, Inc.
400 West McNab Road
Ft. Lauderdale, Florida 33309

SCOPE:

This NOA is being issued under the applicable rules and regulations governing the use of construction materials. The documentation submitted has been reviewed by Miami-Dade County Product Control Division and accepted by the Board of Rules and Appeals (BORA) to be used in Miami Dade County and other areas where allowed by the Authority Having Jurisdiction (AHJ).

This NOA shall not be valid after the expiration date stated below. The Miami-Dade County Product Control Division (In Miami Dade County) and/or the AHJ (in areas other than Miami Dade County) reserve the right to have this product or material tested for quality assurance purposes. If this product or material fails to perform in the accepted manner, the manufacturer will incur the expense of such testing and the AHJ may immediately revoke, modify, or suspend the use of such product or material within their jurisdiction. BORA reserves the right to revoke this acceptance, if it is determined by Miami-Dade County Product Control Division that this product or material fails to meet the requirements of the applicable building code.

This product is approved as described herein, and has been designed to comply with the High Velocity Hurricane Zone of the Florida Building Code.

DESCRIPTION: 0.0615" (min.) Aluminum Storm Panels Shutter

APPROVAL DOCUMENT: Drawing No. 08-352, titled " 0.0615" Aluminum Storm Panel ", sheets 1 through 6 of 6, prepared by Knezevich Associates Consulting Engineers, dated September 01, 2008, signed and sealed by V.J. Knezevich, P.E., on September 03, 2008 bearing the Miami-Dade County Product Control Revision stamp with the Notice of Acceptance number and the expiration date by Miami-Dade County Product Control Division.

MISSILE IMPACT RATING: Large and Small Missile Impact

LABELING: Each panel shall bear a permanent label with the manufacturer's name or logo, city, state and the following statement: "Miami-Dade County Product Control Approved", unless otherwise noted herein.

RENEWAL of this NOA shall be considered after a renewal application has been filed and there has been no change in the applicable building code negatively affecting the performance of this product.

TERMINATION of this NOA will occur after the expiration date or if there has been a revision or change in the materials, use, and/or manufacture of the product or process. Misuse of this NOA as an endorsement of any product, for sales, advertising or any other purposes shall automatically terminate this NOA. Failure to comply with any section of this NOA shall be cause for termination and removal of NOA.

ADVERTISEMENT: The NOA number preceded by the words Miami-Dade County, Florida, and followed by the expiration date may be displayed in advertising literature. If any portion of the NOA is displayed, then it shall be done in its entirety.

INSPECTION: A copy of this entire NOA shall be provided to the user by the manufacturer or its distributors and shall be available for inspection at the job site at the request of the Building Official.

This NOA revises NOA # 05-0713.02 and consists of this page 1, evidence submitted pages E-1 and E-2 as well as approval document mentioned above.

The submitted documentation was reviewed by **Helmy A. Makar, P.E., M.S.**



Helmy A. Makar
 04/01/2009

NOA No. 09-0114.04
Expiration Date: 07/19/2011
Approval Date: 04/01/2009

Town & Country Industries, Inc.

NOTICE OF ACCEPTANCE: EVIDENCE SUBMITTED

1. EVIDENCE SUBMITTED UNDER PREVIOUS APPROVAL #00-1212.05

A. DRAWINGS

1. Drawing no. 00-205, titled " 0.0615" Aluminum Storm Pane ", prepared by Knezevich & Associates, Inc., dated December 8, 2000, last revision #1 dated May 24, 2001, sheets 1 through 6 of 6, signed and sealed by V. J. Knezevich, P.E.

B. TESTS

1. Test report on Large Missile Impact Test, Uniform Static Air Pressure Test and Cyclic Wind Pressure Test of 0.0615" aluminum storm panels, prepared by Construction Testing Corporation, Report No. CTC-00-038, dated November 7, 2000, signed and sealed by Yamil G. Kuri, P.E.
2. Letter from Construction Testing Corporation, for test report No. CTC-00-038, dated June 1, 2001, for the panel thickness, signed and sealed by George Dotzler.

C. CALCULATIONS

1. Comparative analysis and Anchor Analysis, dated December 8, 2000, pages 1 through 52, prepared by Knezevich and Associates, Inc., signed and sealed by V. J. Knezevich, P.E.
2. Revised Comparative analysis and Anchor Analysis, dated June 20, 2001, pages 1 through 4, prepared by Knezevich and Associates, Inc., signed and sealed by V. J. Knezevich, P.E.

D. MATERIAL CERTIFICATIONS

1. Mill Certified Inspection Report of coils, not dated, for Aluminum Alloy 3004-H34 by Jupiter Aluminum Corp., with chemical composition and physical properties.
2. Tensile Test Report from Certified Testing Laboratories, Test Report # CTL - 799F dated August 28, 2000, for Aluminum sample #00-038, tested per ASTM E8-93, signed and sealed by Ramesh Patel, P.E.

2. EVIDENCE SUBMITTED UNDER PREVIOUS APPROVAL # 03-0421.12

A. DRAWINGS

1. Drawing No. 03-260, titled " 0.0615" Aluminum Storm Panel ", sheets 1 through 6 of 6, prepared by Knezevich & Associates, Inc., dated April 04, 2003, last revision #1 dated September 23, 2003 signed and sealed by V.J. Knezevich, P.E.

B. TESTS

1. None.

C. CALCULATIONS

1. None.

D. QUALITY ASSOURANCE

1. By Miami-Dade County Building Code Compliance Office.



Henry A. Makar, P.E., M.S.
Product Control Examiner
NOA No. 09-0114.04
Expiration Date: 07/19/2011
Approval Date: 04/01/2009

Town & Country Industries, Inc.

NOTICE OF ACCEPTANCE: EVIDENCE SUBMITTED

E. MATERIAL CERTIFICATIONS

1. *None.*

3. EVIDENCE SUBMITTED UNDER PREVIOUS APPROVAL # 05-0713.02

A. DRAWINGS

1. *Drawing No. 05-354, titled " 0.0615" Aluminum Storm Panel ", sheets 1 through 6 of 6, prepared by Thornton-Tomasetti Group, dated June 29, 2005, last revision #0 dated June 29, 2005 signed and sealed by V.J. Knezevich, P.E.*

B. TESTS

1. *None.*

C. CALCULATIONS

1. *Anchor Analysis, dated June 15, 2005, 31 pages, prepared by Thornton-Tomasetti Group, signed and sealed by V. J. Knezevich, P.E.*

D. QUALITY ASSOURANCE

1. *By Miami-Dade County Building Code Compliance Office.*

E. MATERIAL CERTIFICATIONS

1. *None.*

4. NEW EVIDENCE SUBMITTED

A. DRAWINGS

1. *Drawing No. 08-352, titled " 0.0615" Aluminum Storm Panel ", sheets 1 through 6 of 6, prepared by Knezevich Associates Consulting Engineers, dated September 01, 2008, signed and sealed by V.J. Knezevich, P.E., on September 03, 2008.*

B. TESTS

1. *None.*

C. CALCULATIONS

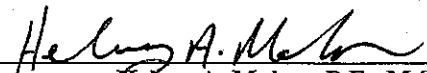
1. *Anchor Analysis, dated September 09, 2008, 19 pages, prepared by Knezevich Associates Consulting Engineers, dated September 01, 2008, signed and sealed by V.J. Knezevich, P.E., on September 03, 2008.*

D. QUALITY ASSOURANCE

1. *By Miami-Dade County Building Code Compliance Office.*

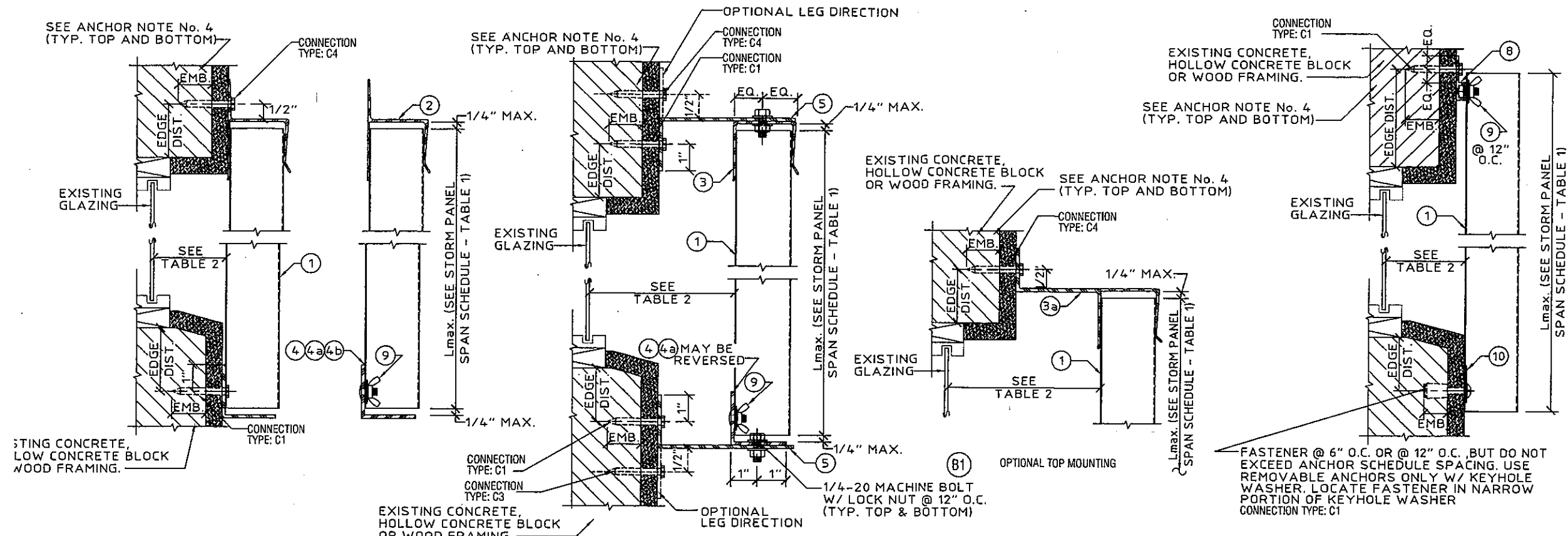
E. MATERIAL CERTIFICATIONS

1. *None.*



Helmy A. Makar, P.E., M.S.
Product Control Examiner
NOA No. 09-0114.04
Expiration Date: 07/19/2011
Approval Date: 04/01/2009

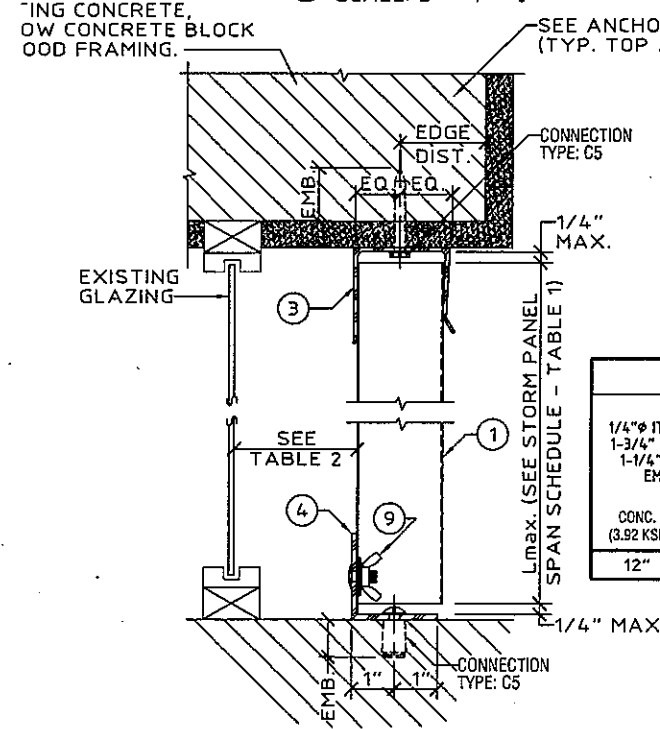
0.0615" ALUMINUM STORM PANEL



A WALL MOUNT SECTION
SCALE: 3" = 1' - 0"

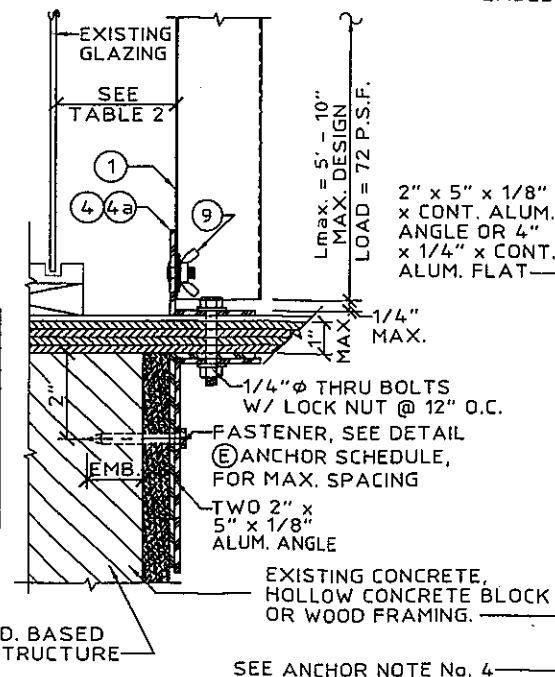
B BUILD-OUT MOUNT SECTION
SCALE: 3" = 1' - 0"

C "F" TRACK/DIRECT MOUNT SECTION
SCALE: 3" = 1' - 0"

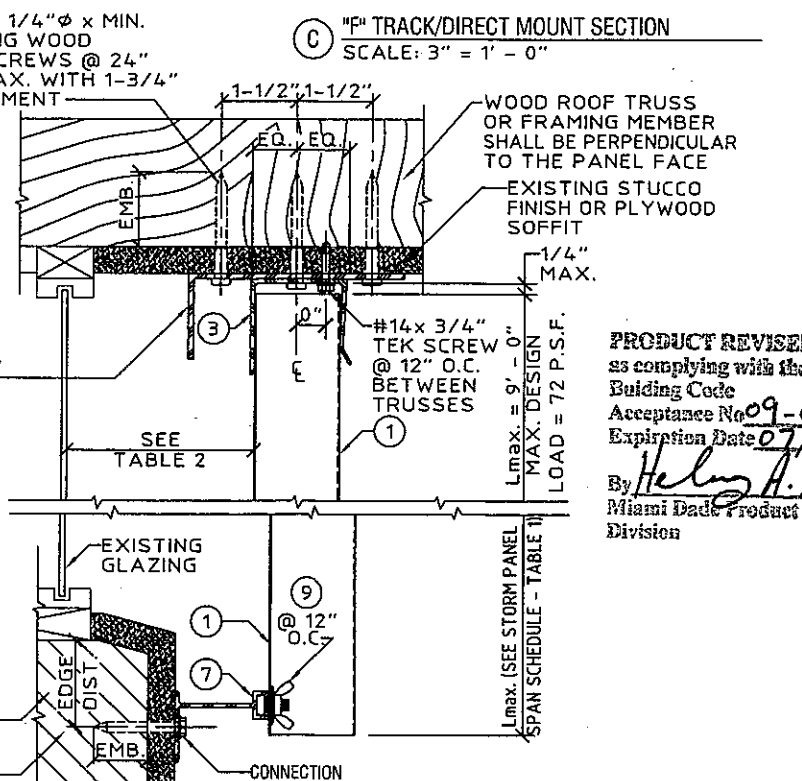


D CEILING/FLOOR MOUNT SECTION
SCALE: 3" = 1' - 0"

DETAIL (E) ("PASS THRU" SEC.) ANCHOR SCHEDULE			
1/4" φ ITW TAPCON W/ 1-3/4" MIN. (CONC.) OR 1-1/4" MIN. (BLOCK) EMBEDMENT	1/4" φ POWERS CALK-IN W/ 7/8" EMBEDMENT & 1/4-20 STAINLESS STEEL MACHINE SCREW	1/4" φ x MIN. 2-1/2" LONG WOOD LAG SCREW W/ 7/8" EMBEDMENT	MINIMUM 1-3/4" EMBEDMENT SHEAR PARALLEL OR PERPENDICULAR TO WOOD GRAIN
CONC. (3.92 KSI)	HOLLOW C-90 BLOCK CONC. (2.00 KSI)	CONC. (2.00 KSI)	WOOD
12"	4"	7"	12"




E "PASS THRU" SECTION
SCALE: 3" = 1' - 0"



F CEILING MOUNT / BUILD OUT SECTION
SCALE: 3" = 1' - 0"

PRODUCT REVISED
as complying with the Florida Building Code
Acceptance No. 09-0114.04
Expiration Date 07/19/2011
By *Helmy A. Helmy*
Miami Dade Product Control Division



KNEZEVICH ASSOCIATES
Consulting Engineers
2590 S.W. 106th Terrace • Davie, Florida 33324
(954) 821-9933 • F (954) 452-7960 • COA 27989
website: www.knezevich.com • email: vk@knezevich.com

Copyright © 2008 Knezevich & Associates, LLC d/b/a Knezevich Associates

Town & Country INDUSTRIES
Wholesale Aluminum and Building Products
400 WEST McVAB ROAD
FORT LAUDERDALE, FL 33309
PHONE 954.970.9999 FAX 954.970.9988

no.	date	by	description

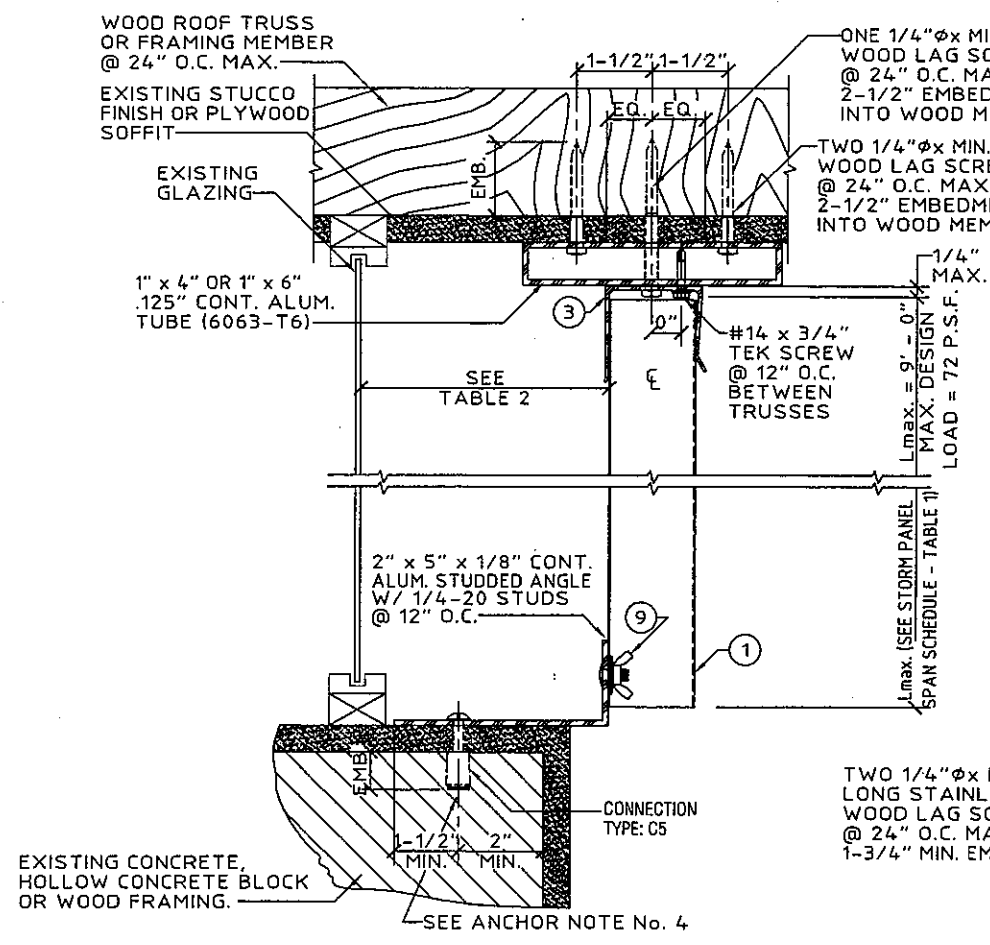
V.J. Knezevich
Professional Engineer
FL License No.: PE 0010983
FLORIDA COA No.: 27989

Helmy A. Helmy
Sept 3, 2008

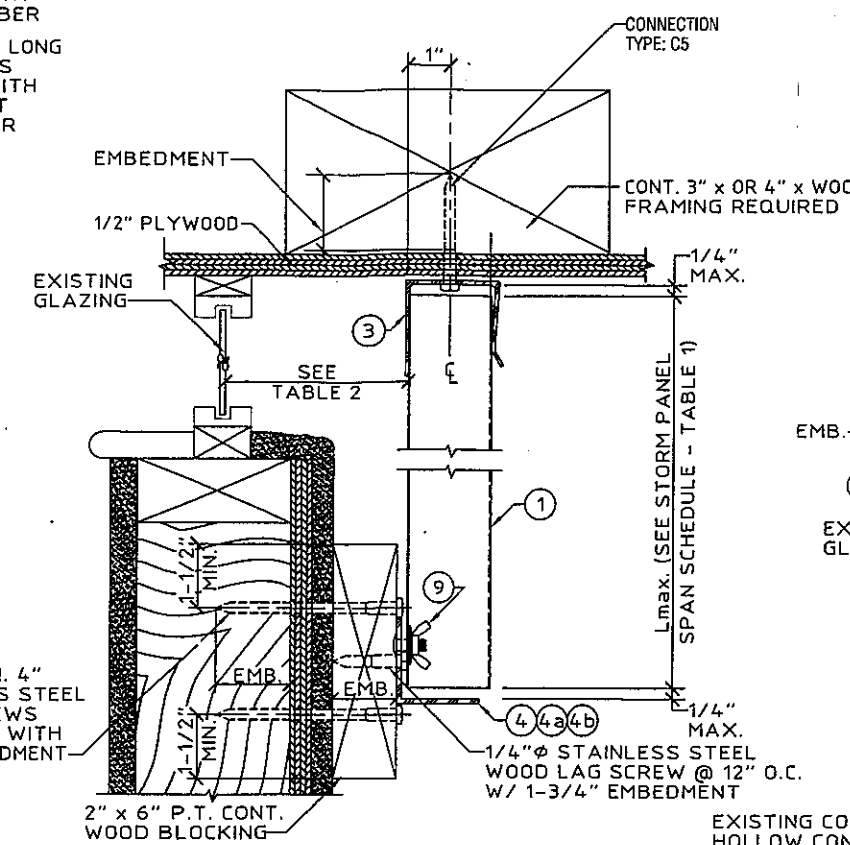
drawn by: scale: AS NOTED
date: 09/01/2008
project no.: **08-352**

PAGE 2 of 6

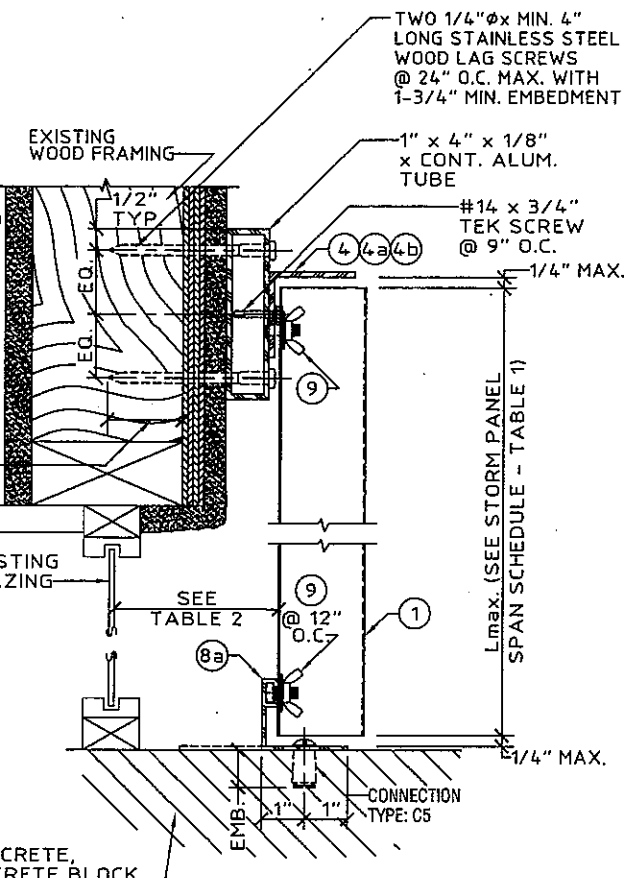
0.0615" ALUMINUM STORM PANEL



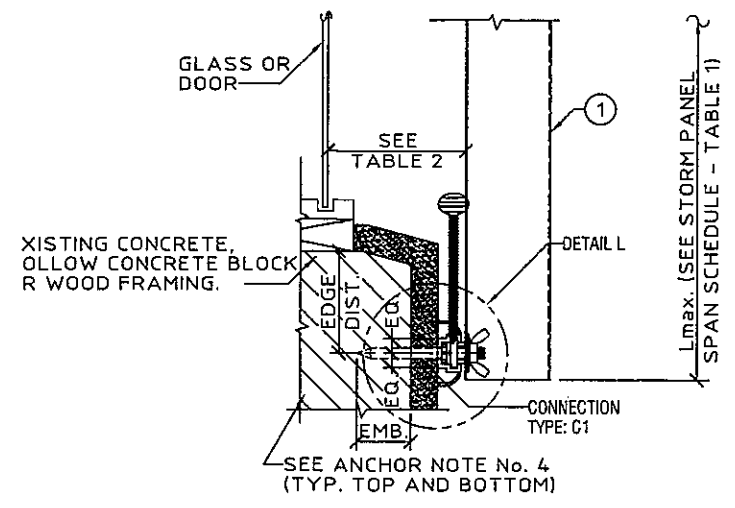
G BUILD-DOWN / BUILD-OUT SECTION
SCALE: 3" = 1' - 0"



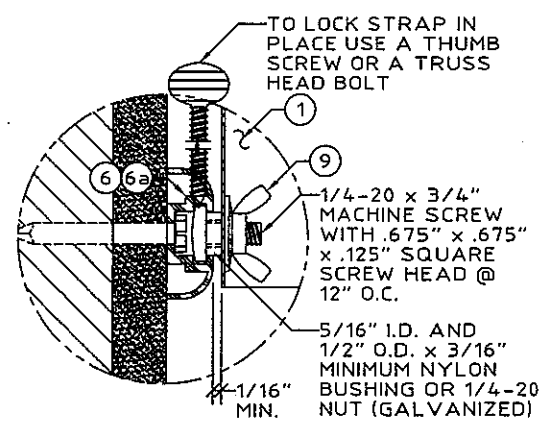
H CEILING/BUILD-OUT MOUNT SECTION
SCALE: 3" = 1' - 0"



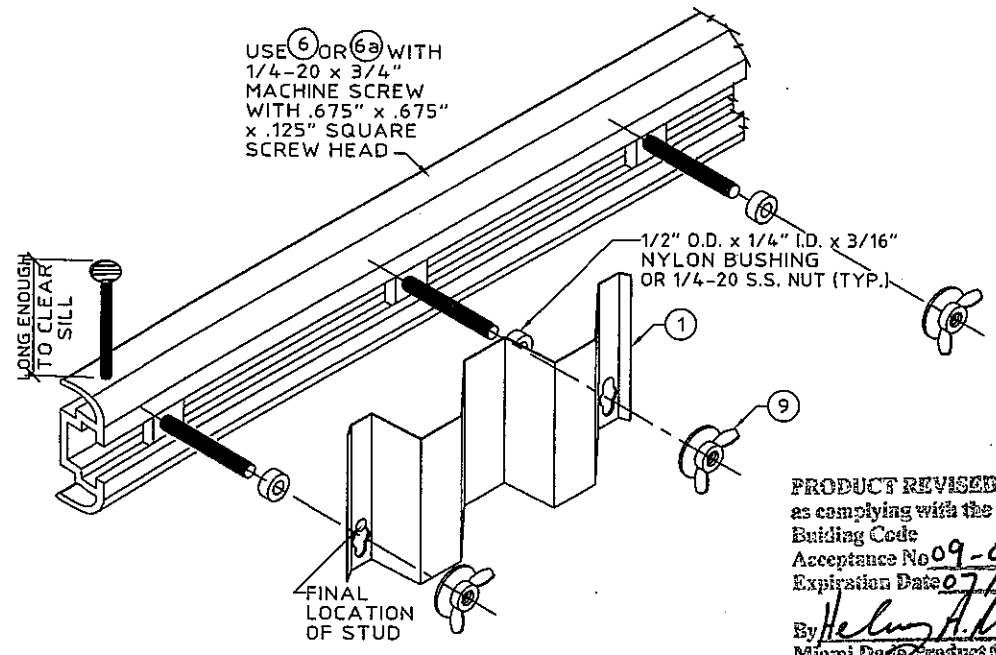
J BUILD-OUT/FLOOR MOUNT SECTION
SCALE: 3" = 1' - 0"



K C-TRACK ASSEMBLY - INSIDE MOUNT
SCALE: 3" = 1' - 0"



L C-TRACK ASSEMBLY - (BLOW UP)
SCALE: HALF SIZE



M C-TRACK ASSEMBLY (ISOMETRIC VIEW)
N.T.S.

PRODUCT REVISED
as complying with the Florida
Building Code
Acceptance No. 09-0114.04
Expiration Date 07/19/2011
By *Helmut H. Weber*
Miami Dade Product Control
Division

K&E
KNEZEVICH ASSOCIATES
Consulting Engineers
2580 S.W. 105th Terrace, Suite 33324
Davie, Florida 33324
(954) 821-6833 • F (954) 452-7980 • COA 27989
website: www.knezevich.com email: V.K.Knezevich.com

Town & Country
INDUSTRIES
Wholesale Aluminum and Building Products
400 WEST MCNAB ROAD
FORT LOUDERDALE, FL 33309
PHONE 954.970.9999 FAX 954-970-9988

no.	date	description

V.J. Knezevich
Professional Engineer
FL License No.: PE 0010983
FLORIDA COA No.: 27989

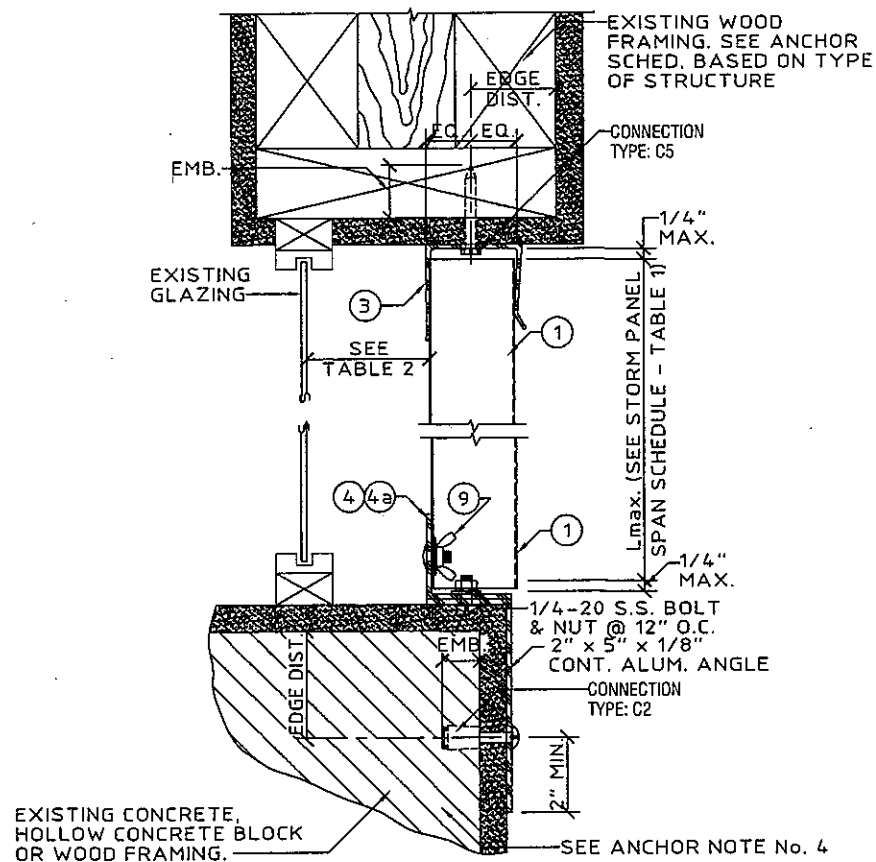
[Signature]
Sept 3, 2008

drawn by *[Signature]*
date WAS NOTED

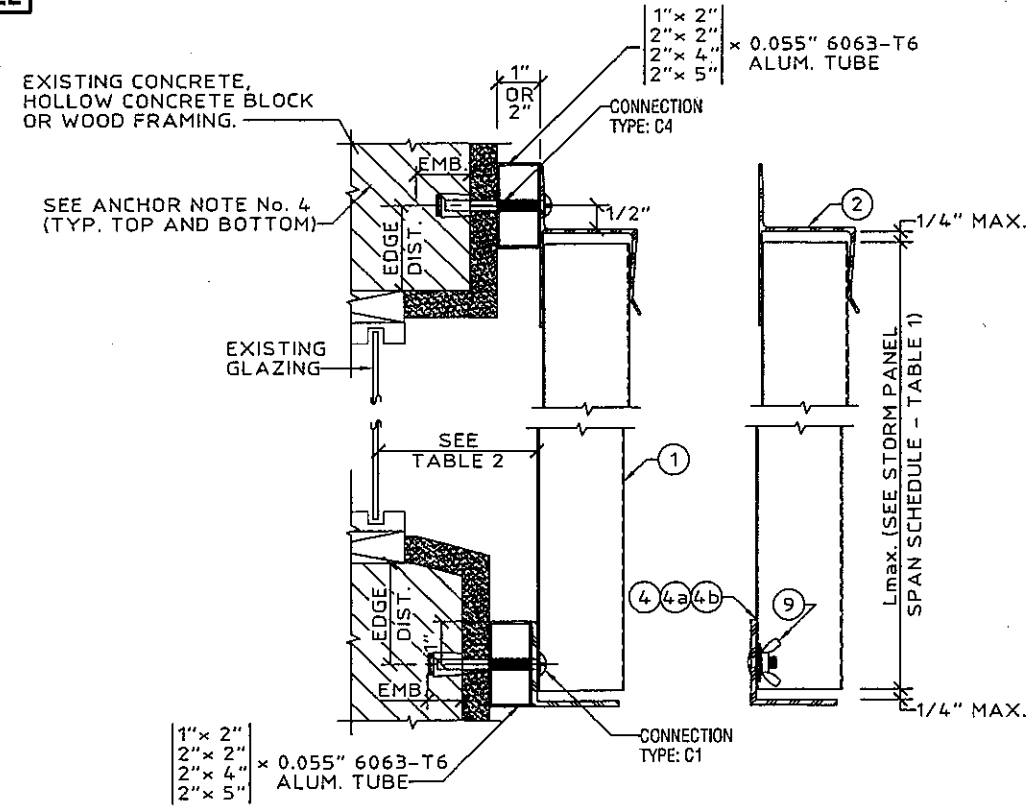
date 09/01/2008

project no. 08-352

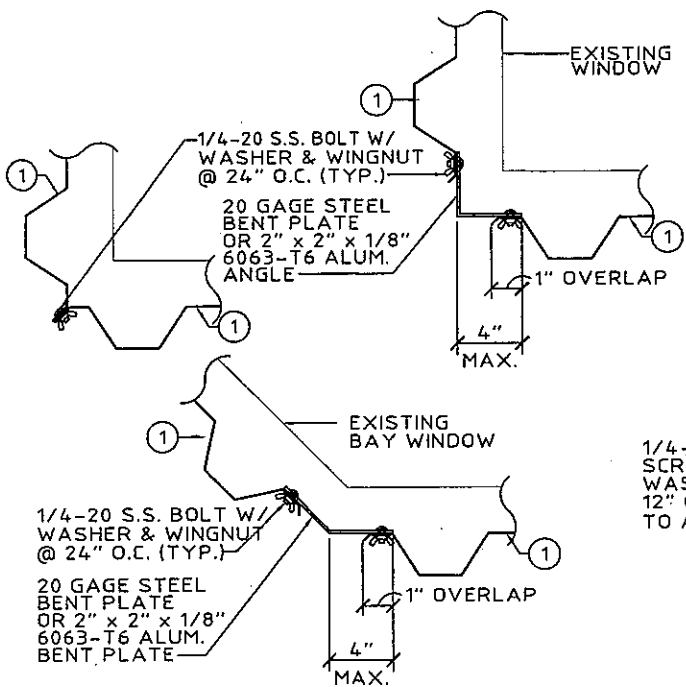
0.0615" ALUMINUM STORM PANEL



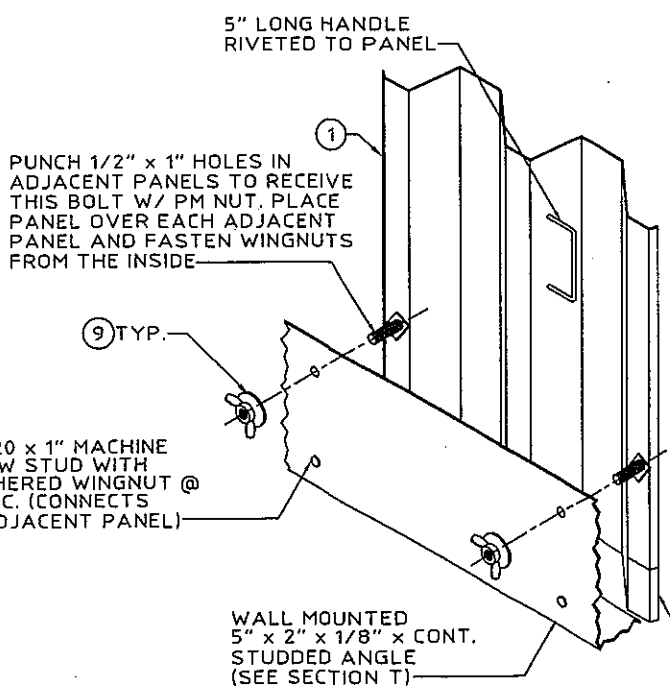
(N) WOOD CEILING/INSIDE MOUNT SECTION
SCALE: 3" = 1'-0"



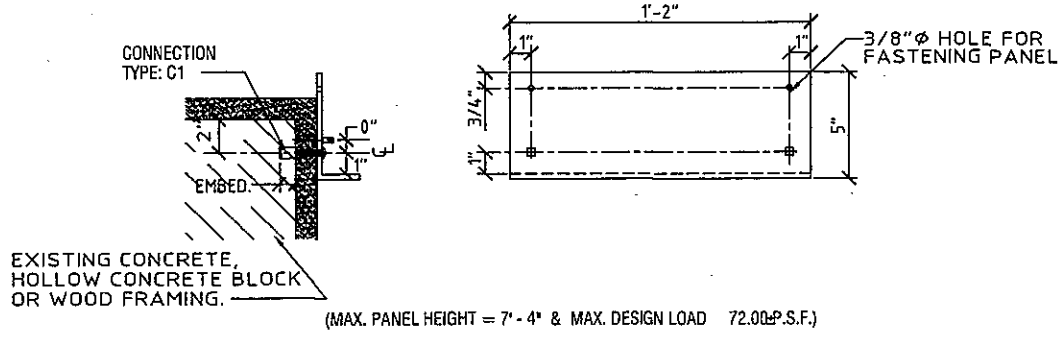
(P) WALL MOUNT SECTION
SCALE: 3" = 1'-0"



(R) TYPICAL CORNER CLOSURE DETAILS (PLAN)
SCALE: 1-1/2" = 1'-0"




(S) OPTIONAL INTERIOR FASTENING DETAIL (ISOMETRIC)
N.T.S.



(T) INTERIOR FASTENING ANGLE ASSEMBLY
SCALE: 1-1/2" = 1'-0"

DETAILS (S) & (T) NOTE:
THESE DETAILS DEPICT THE CONNECTION OF THE LAST PANEL FOR AN OPENING WITH PANELS INSTALLED FROM INSIDE. USE OF THESE DETAILS SHALL BE IN CONJUNCTION WITH AN "H" HEADER OR "U" HEADER TOP MOUNT.

PRODUCT REVISED
as complying with the Florida Building Code
Acceptance No. **09-0114.04**
Expiration Date **07/19/2011**
By *Helmut A. Knezevich*
Miami Dept. Product Control
Division



KNEZEVICH ASSOCIATES
Consulting Engineers
2590 S.W. 105th Terrace • Davie, Florida 33324
(954) 821-6933 • F (954) 452-7960 • COA 27989
website: www.knezevich.com • email: vk@knezevich.com

Town & Country INDUSTRIES
Wholesale Aluminum and Building Products

400 WEST MCNAB ROAD
FORT LAUDERDALE, FL 33309
PHONE 954.970.9999 FAX 954.970-9988

no.	date	by	description

V.J. Knezevich
Professional Engineer
FL License No.: PE 0010983
FLORIDA COA NO.: 27989

[Signature]
Sept 3, 2008
drawn by *[Signature]* scale *[Signature]*
date **09/01/2008** who AS NOTED
project no.
08-352